

BEAR LANE

OX1 4EJ

B-, C- AND D-GRADE ROOMS

Our Bear Lane site provides some of our most affordable accommodation as well as being closest to the main College site. Located just behind the High Street, these rooms vary widely in terms of size, light, amenities and noise levels, and are graded accordingly.

There are no en suite rooms, but for those seeking more private living, there are several 2, 3, & 4 bed flats (Staircases 17, 18, 19, 21 and 22) which share one bathroom and one kitchen per flat. For those who appreciate a more communal vibe, the 17 rooms in Staircase 20 share a number of shower rooms and separate toilets, and two kitchens.

The Bear Lane site benefits from an on-site laundry, a communal TV room, two courtyard areas and the new Bear Lane Reading Room. The Main Lodge is just a couple of minutes away.

Specific room availability varies from year to year.



Communal spaces

Central location

Shared flats



Lincoln College
UNIVERSITY OF OXFORD

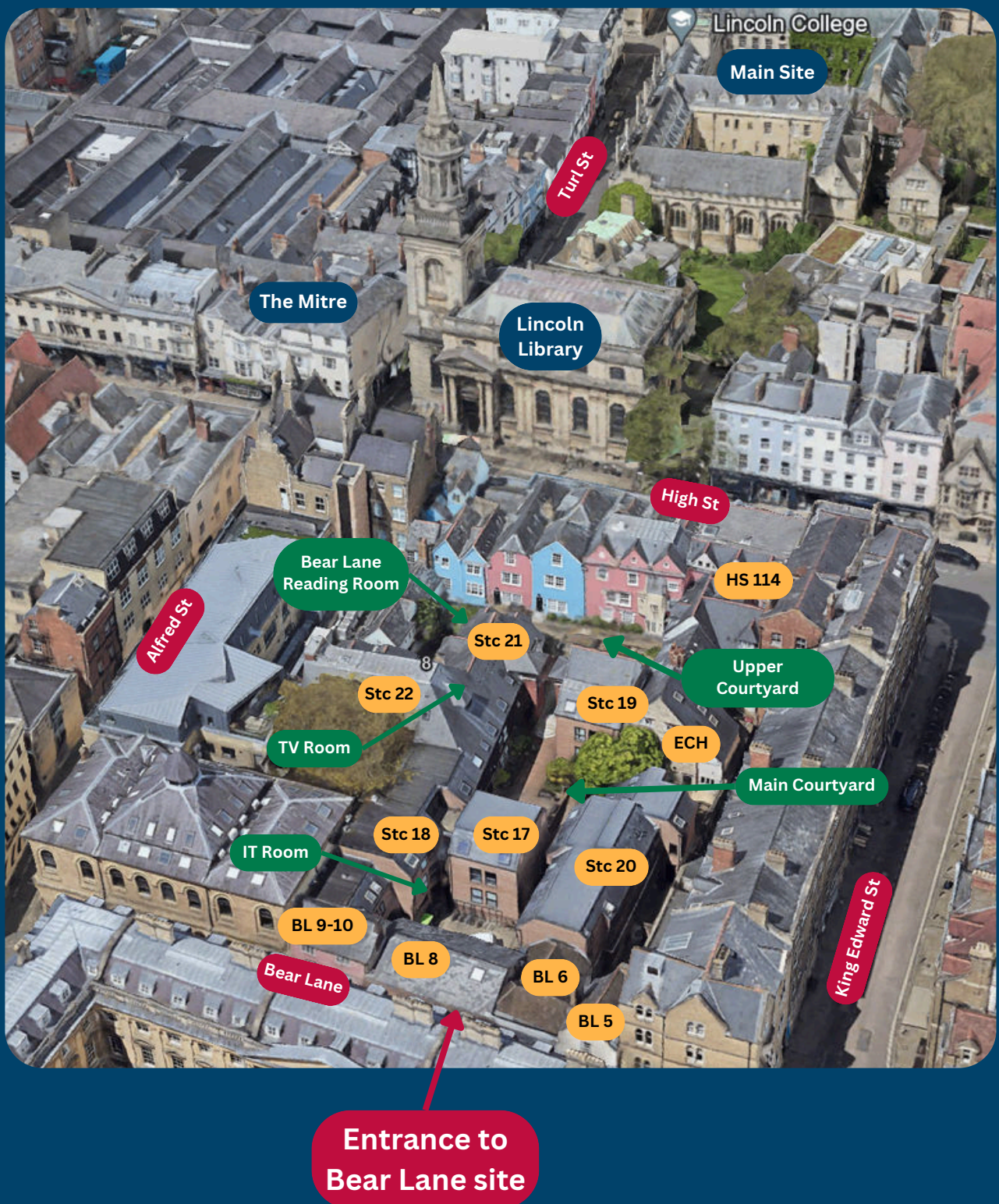
We're signed up to
**The Student
Accommodation Code**
To find out more visit www.TheSAC.org.uk



GETTING THERE

The Bear Lane site is very central, located just opposite the library. Although part of the site occupies the High Street, access is via gates on Bear Lane itself.

A little way down Bear Lane is the famous Bear Inn, a favourite of Lincoln students, which offers live jazz. Sandy's Piano & Wine Bar is around the corner on King Edward Street and is open til late for those more sophisticated nights out.



STAIRCASES 17 & 18

Up to 18 C grade rooms

Graduate accommodation in Stc 17 and 18 consist of 2 bedroom flats, each sharing a bathroom and a kitchen.



17.01 kitchen



17.01 bathroom



17.01a



17.01a



17.01b



17.01b

STAIRCASES 17 & 18

Up to 18 C grade rooms

Graduate accommodation in Stc 17 and 18 consist of 2 bedroom flats, each sharing a bathroom and a kitchen.



17.03 kitchen



17.03 bathroom



17.03a



17.03a



17.03b



17.03b

STAIRCASES 17 & 18

Up to 18 C grade rooms

Graduate accommodation in Stc 17 and 18 consist of 2 bedroom flats, each sharing a bathroom and a kitchen.



17.04 kitchen



17.04 bathroom



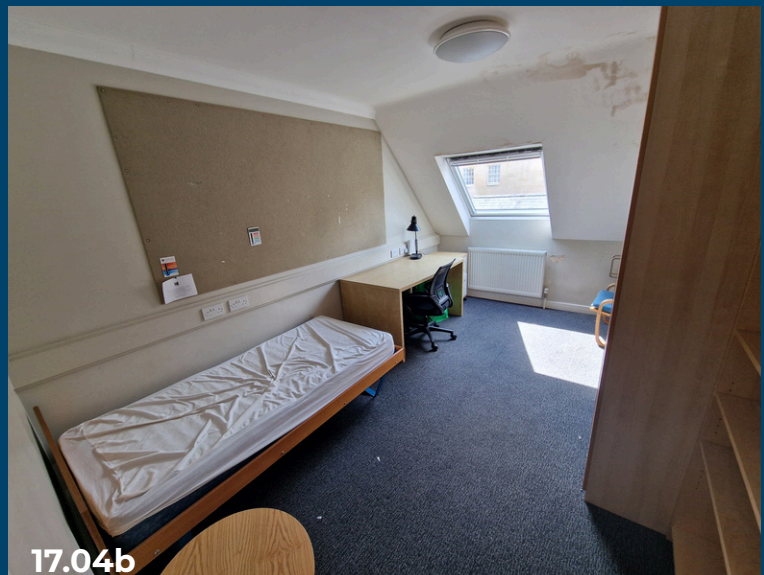
17.04a



17.04a



17.04b



17.04b

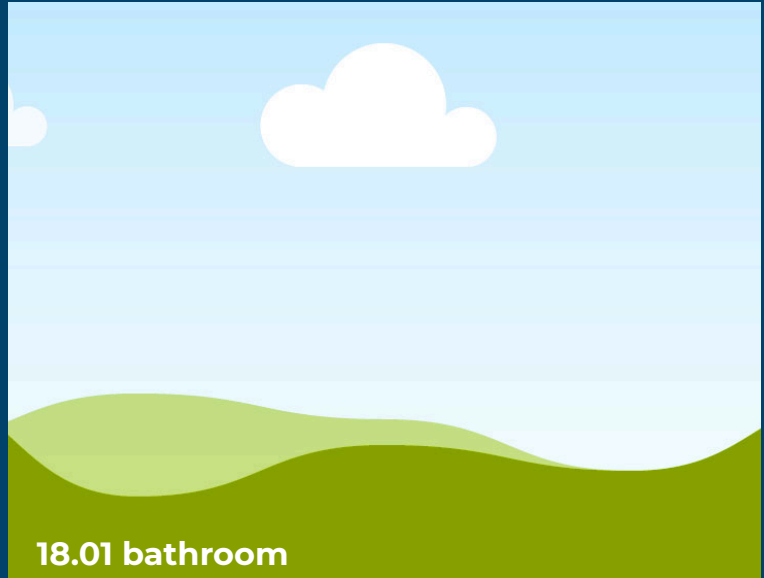
STAIRCASES 17 & 18

Up to 18 C grade rooms

Graduate accommodation in Stc 17 and 18 consist of 2 bedroom flats, each sharing a bathroom and a kitchen.



18.01 kitchen



18.01 bathroom



18.01a



18.01a



18.01b



18.01b

STAIRCASES 17 & 18

Up to 18 C grade rooms

Graduate accommodation in Stc 17 and 18 consist of 2 bedroom flats, each sharing a bathroom and a kitchen.



STAIRCASES 17 & 18

Up to 18 C grade rooms

Graduate accommodation in Stc 17 and 18 consist of 2 bedroom flats, each sharing a bathroom and a kitchen.



18.03 kitchen



18.03 bathroom



18.03a



18.03a



18.03b

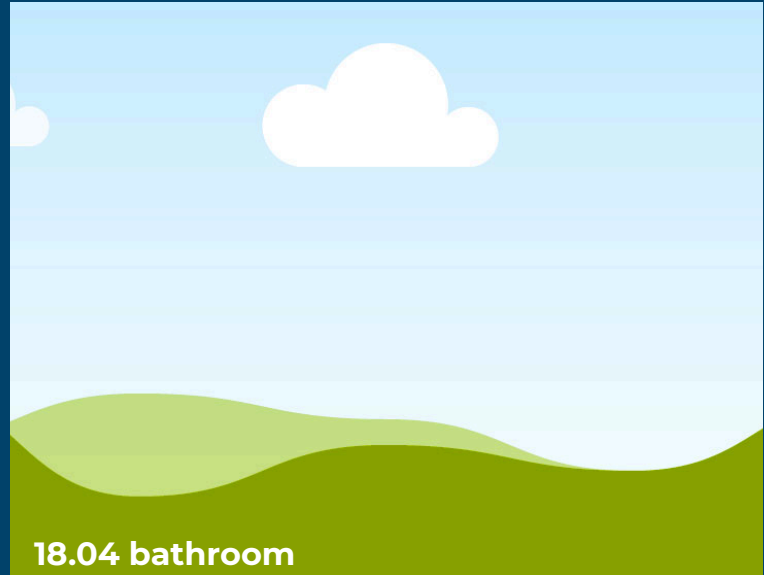


18.03b

STAIRCASES 17 & 18

Up to 18 C grade rooms

Graduate accommodation in Stc 17 and 18 consist of 2 bedroom flats, each sharing a bathroom and a kitchen.



STAIRCASES 17 & 18

Up to 18 C grade rooms

Graduate accommodation in Stc 17 and 18 consist of 2 bedroom flats, each sharing a bathroom and a kitchen.



18.05 kitchen



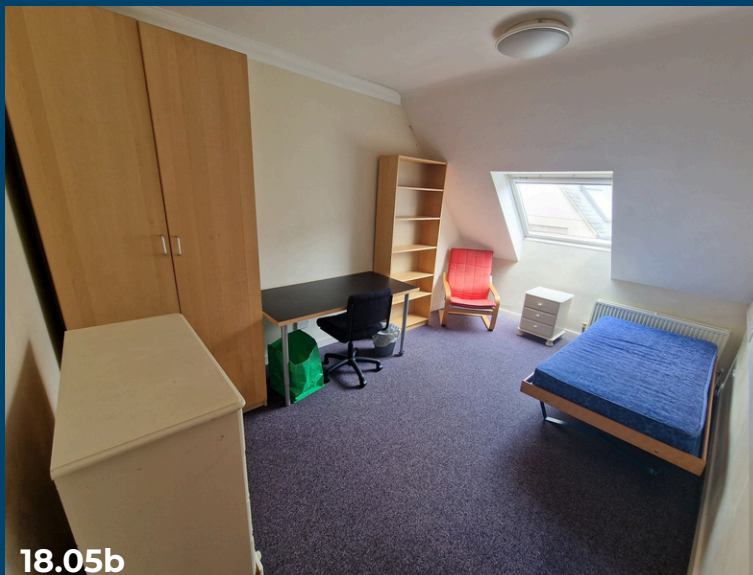
18.05 bathroom



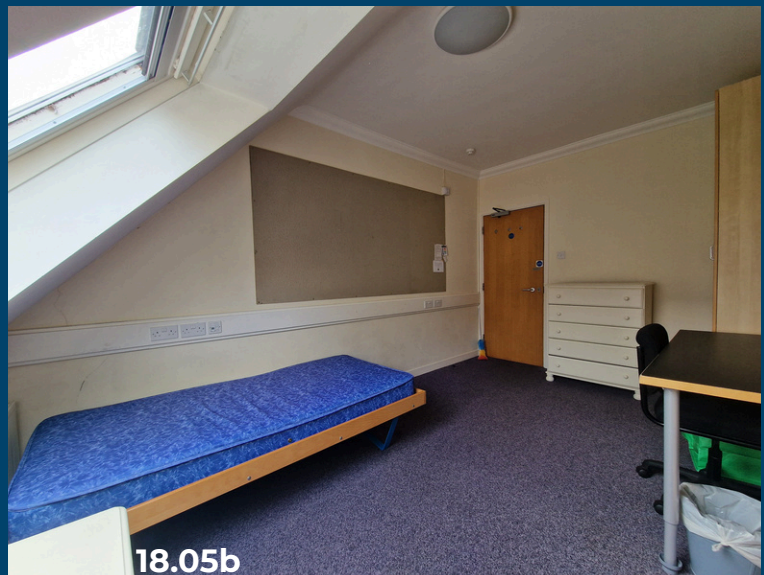
18.05a



18.05a



18.05b

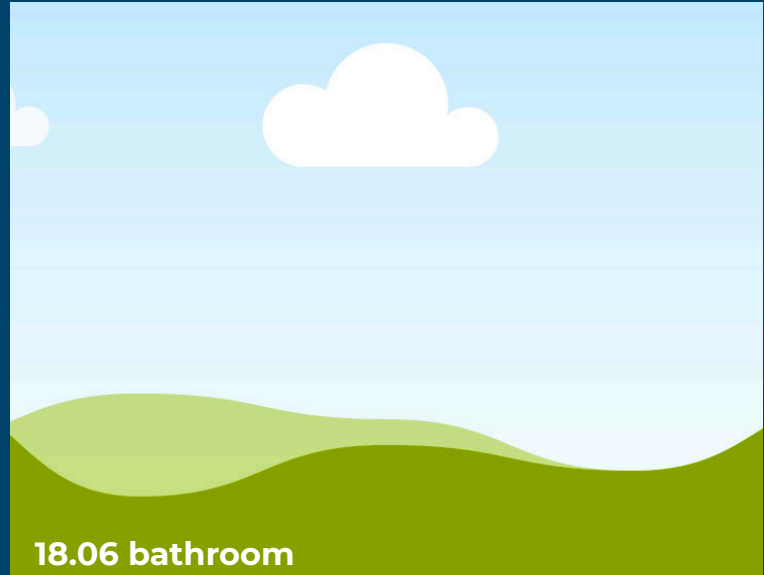


18.05b

STAIRCASES 17 & 18

Up to 18 C grade rooms

Graduate accommodation in Stc 17 and 18 consist of 2 bedroom flats, each sharing a bathroom and a kitchen.



STAIRCASE 19

Up to 6 B&C grade rooms

Graduate accommodation in Stc 19 consists of 2 bedroom flats, each sharing a bathroom and a kitchen. Rooms in flats 19.01 and 19.02 are B grade, and rooms in flat 19.03 are C grade.



STAIRCASE 19

Up to 6 B&C grade rooms

Graduate accommodation in Stc 19 consists of 2 bedroom flats, each sharing a bathroom and a kitchen. Rooms in flats 19.01 and 19.02 are B grade, and rooms in flat 19.03 are C grade.

A diagram of Staircase 19 showing a 3x2 grid of rooms. Each room is represented by a stylized landscape with green hills and a blue sky with white clouds. The rooms are labeled as follows: 19.02 kitchen, 19.02 bathroom, 19.02a, 19.02a, 19.02b, and 19.02b.

19.02 kitchen

19.02 bathroom

19.02a

19.02a

19.02b

19.02b

STAIRCASE 19

Up to 6 B&C grade rooms

Graduate accommodation in Stc 19 consists of 2 bedroom flats, each sharing a bathroom and a kitchen. Rooms in flats 19.01 and 19.02 are B grade, and rooms in flat 19.03 are C grade.



19.03 kitchen



19.03 bathroom



19.03a



19.03a



19.03b



19.03b

STAIRCASE 20

Up to 17 C&D grade rooms

Graduate accommodation in Stc 20 consists of 17 bedrooms, sharing two kitchens, six showers and four toilets. Each room also has its own sink. Rooms 1-2, 5-9 and 15-17 are D grade, and rooms 3-4 and 11-14 are C grade.



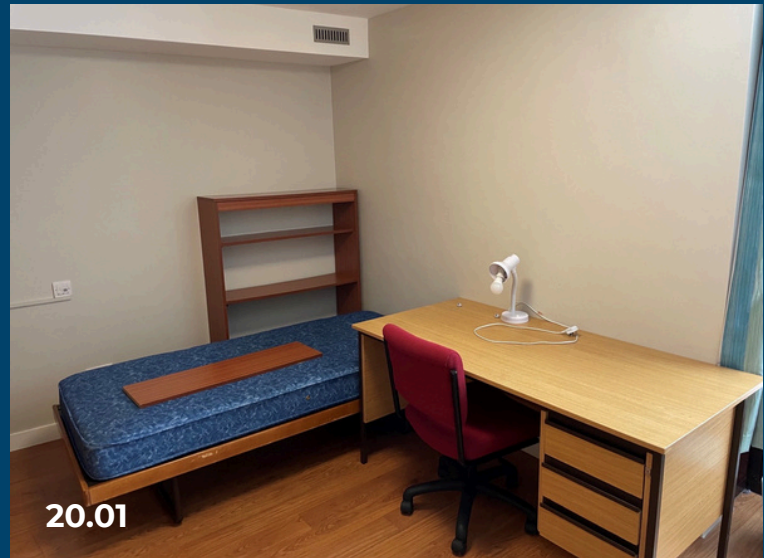
20 first floor kitchen



20 second floor kitchen



20.01



20.01



20.02



20.02



20.03



20.03



20.04



20.04



20.05



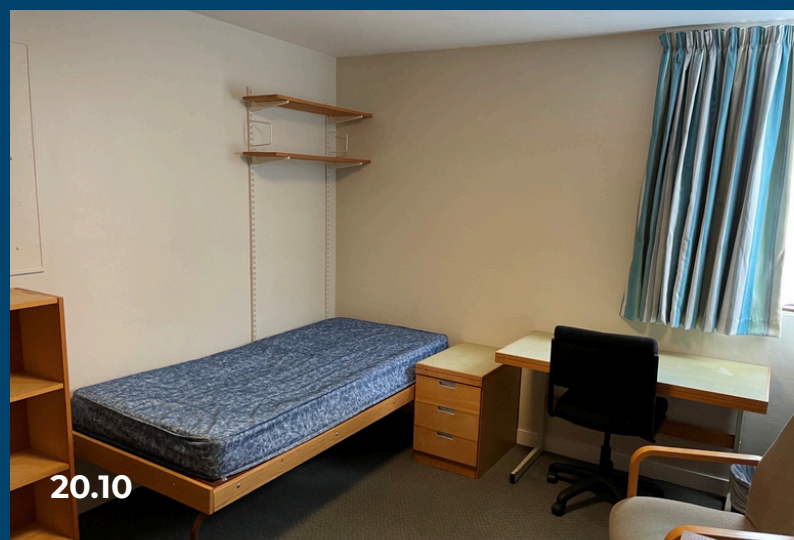
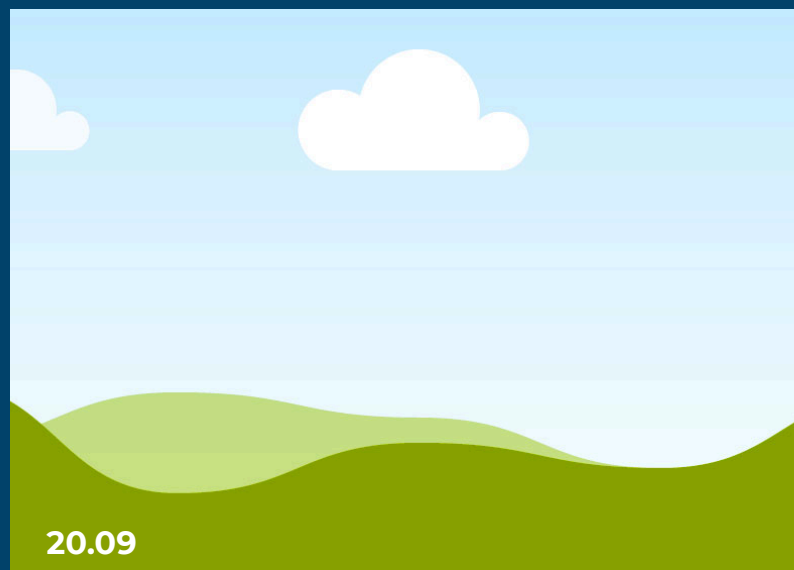
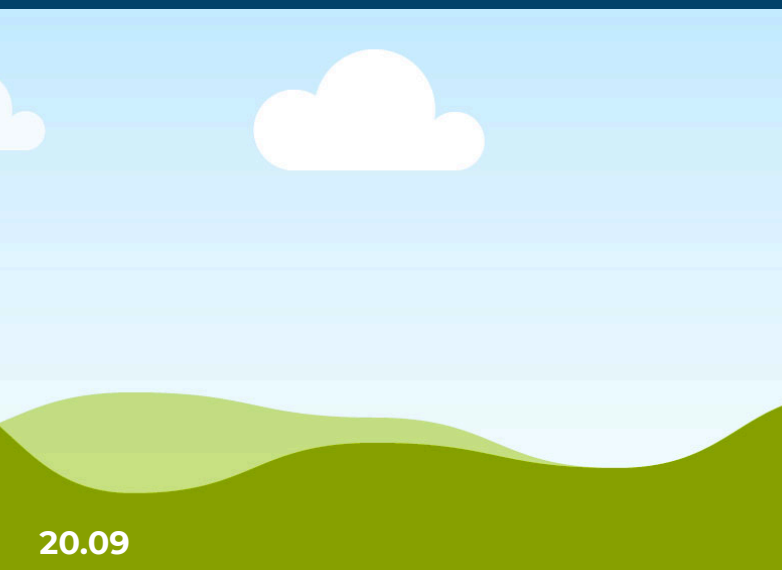
20.05

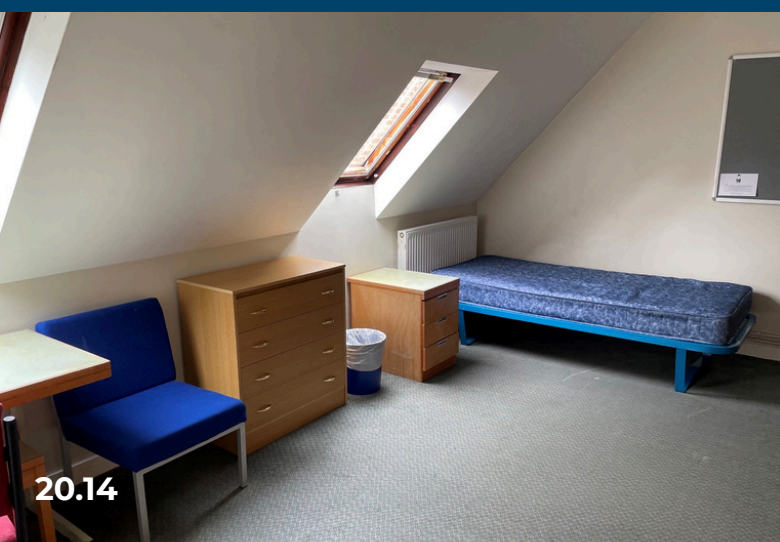
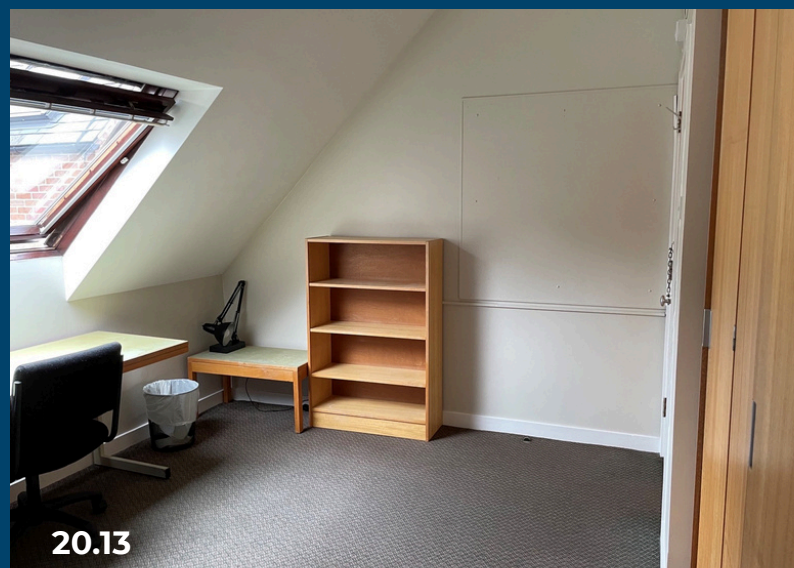
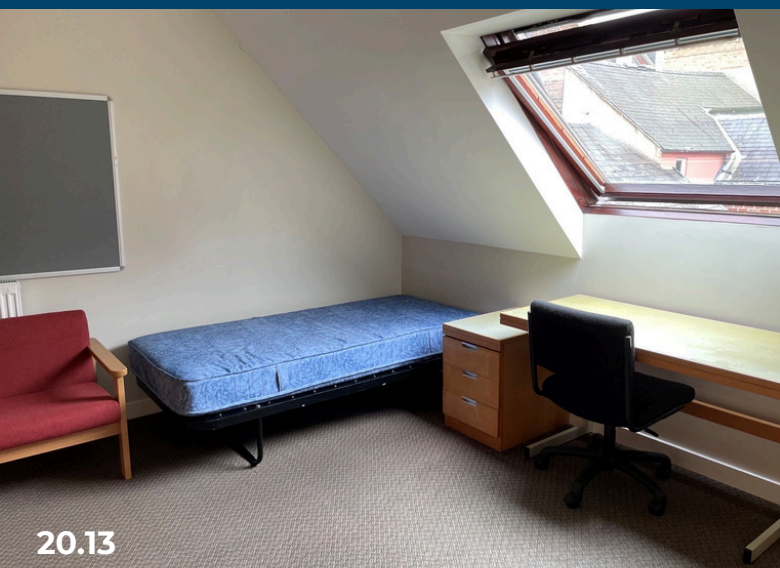


20.06



20.06







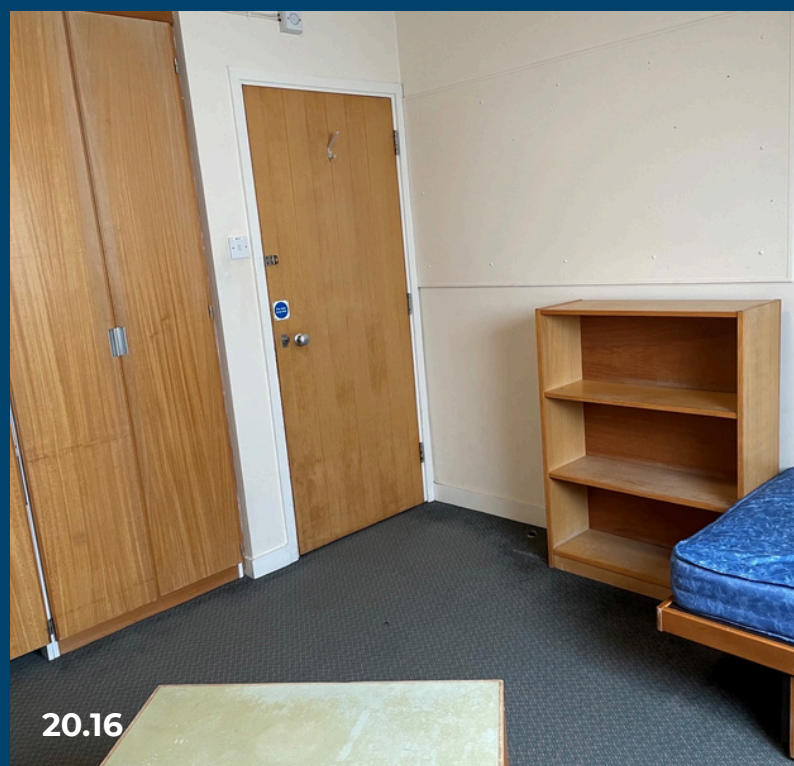
20.15



20.15



20.16



20.16



20.17



20.17

STAIRCASE 21

Up to 8 B grade rooms

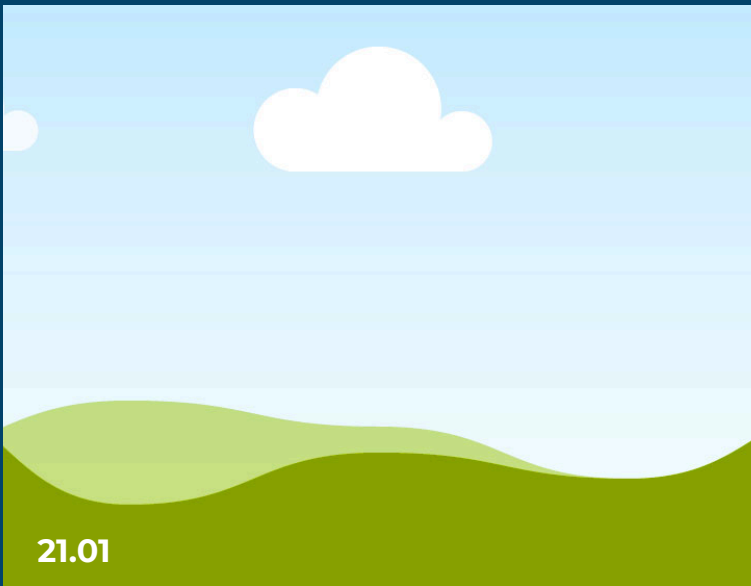
Graduate accommodation in Stc 21 consists of 2-3 bedroom flats, each sharing a bathroom and a kitchen.



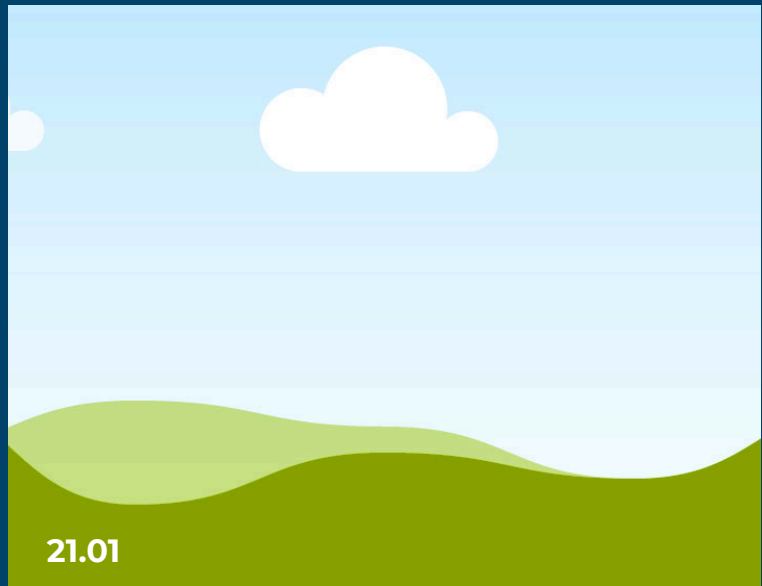
21.01-02 kitchen



21.01-02 kitchen



21.01



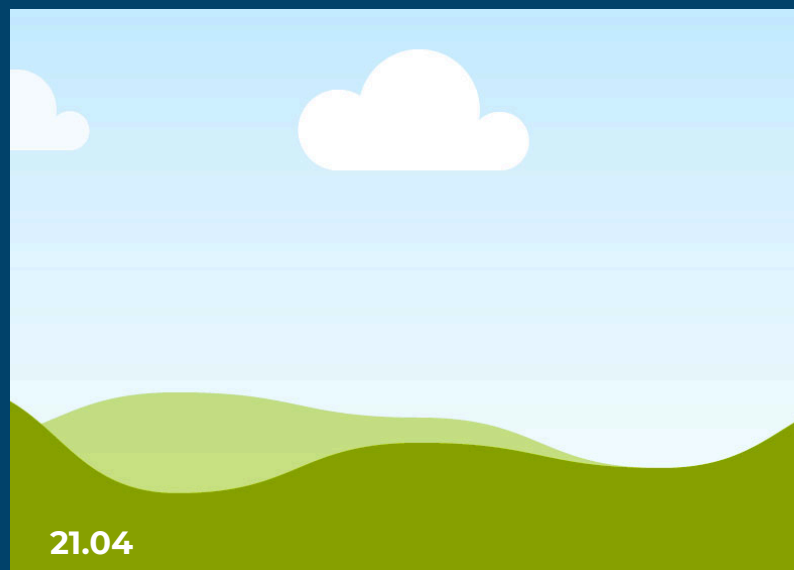
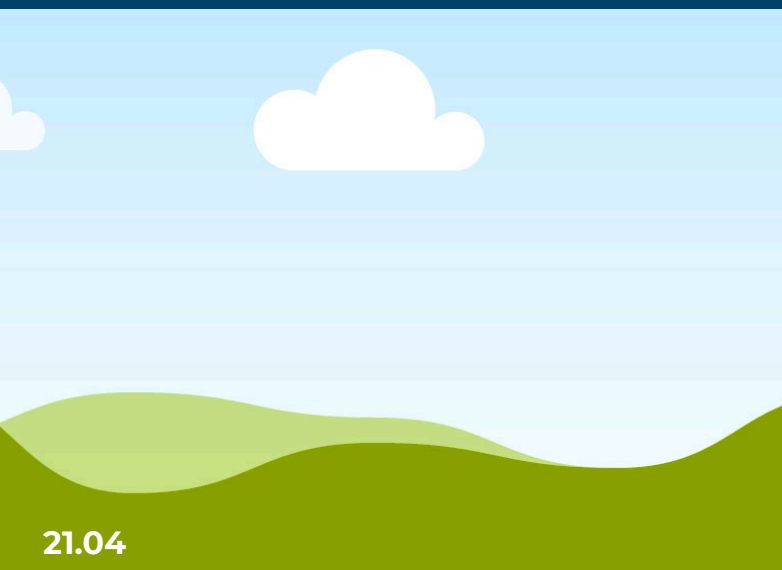
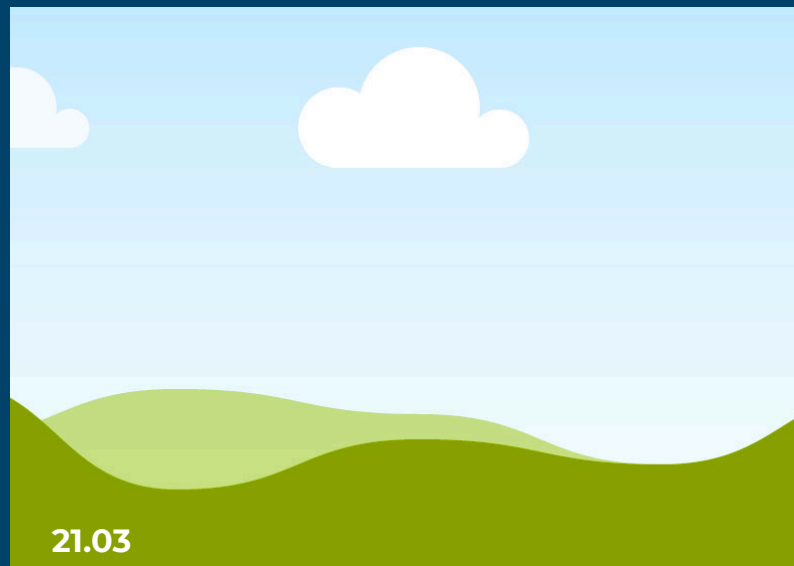
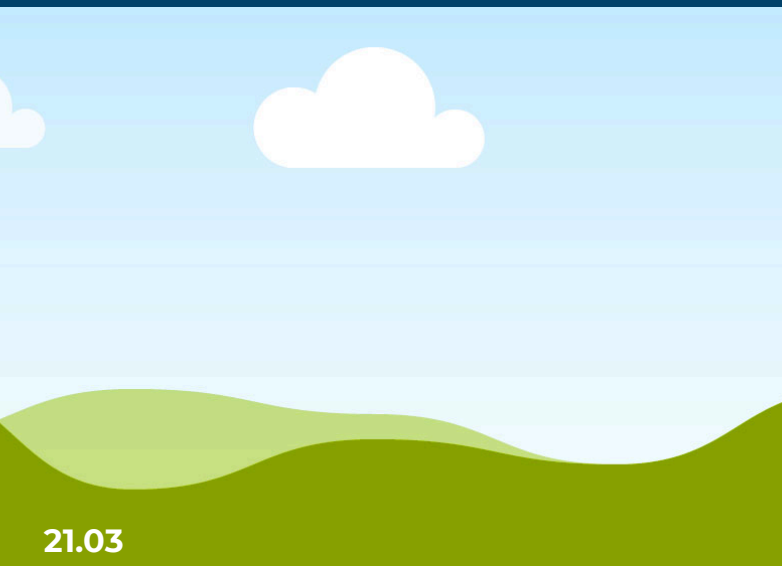
21.01



21.02



21.02





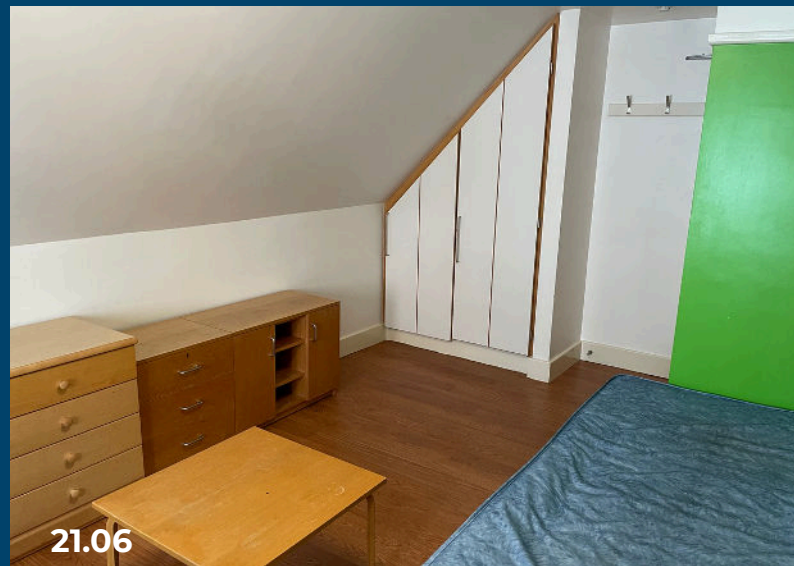
21.06-08 kitchen



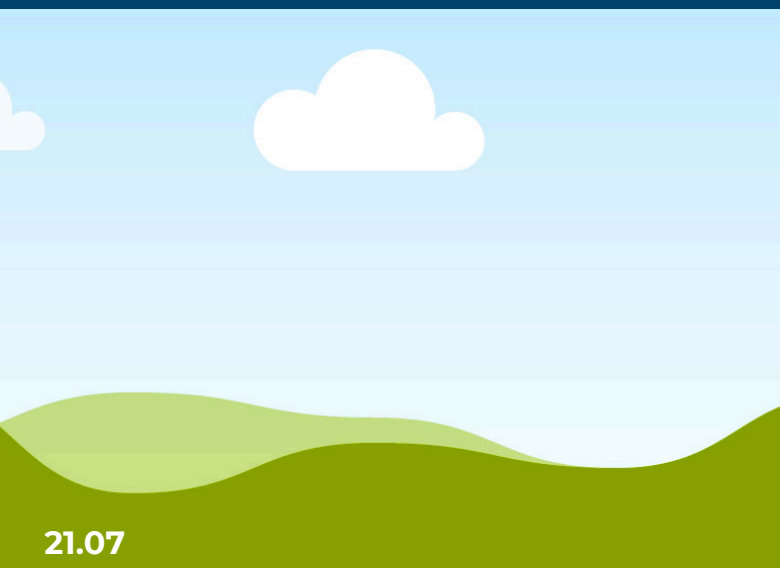
21.06-08 bathroom



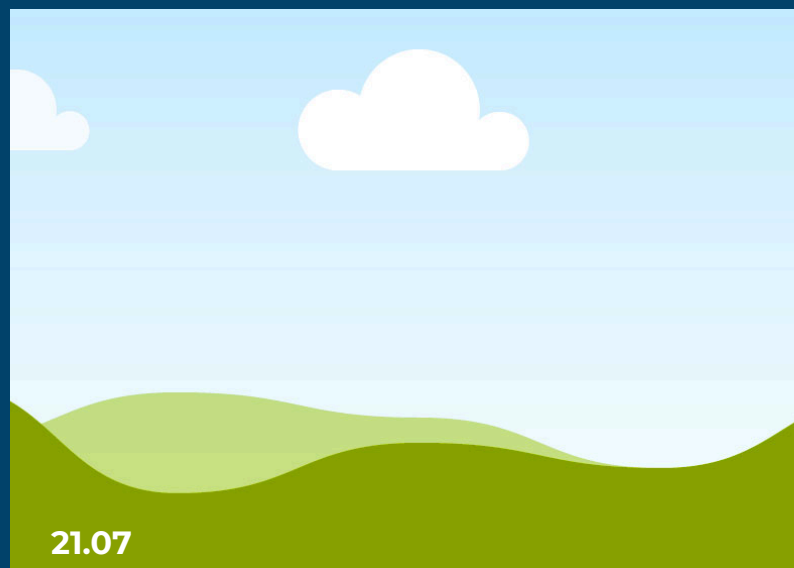
21.06



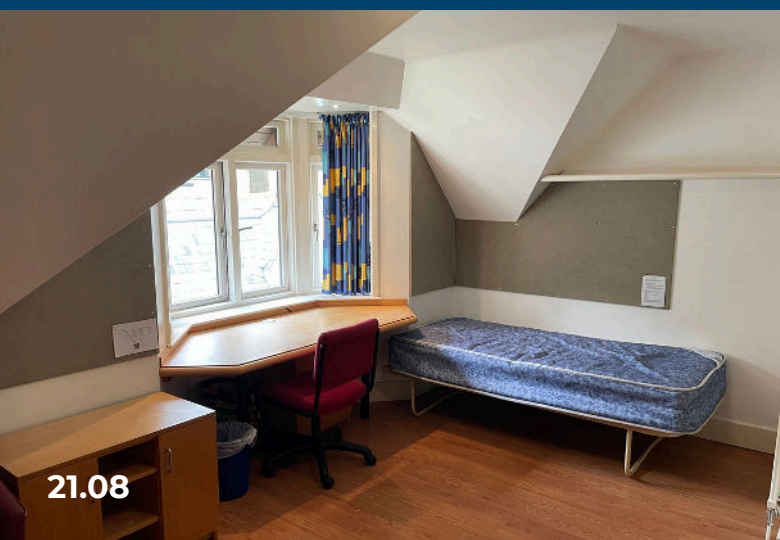
21.06



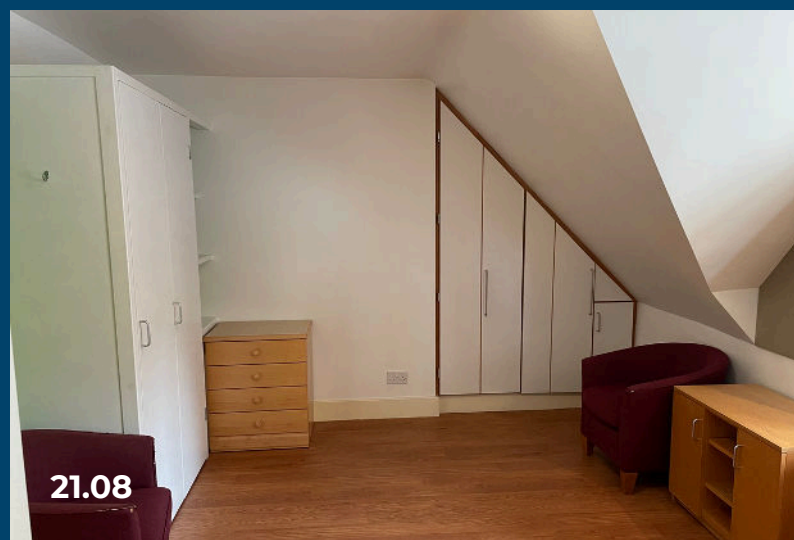
21.07



21.07



21.08

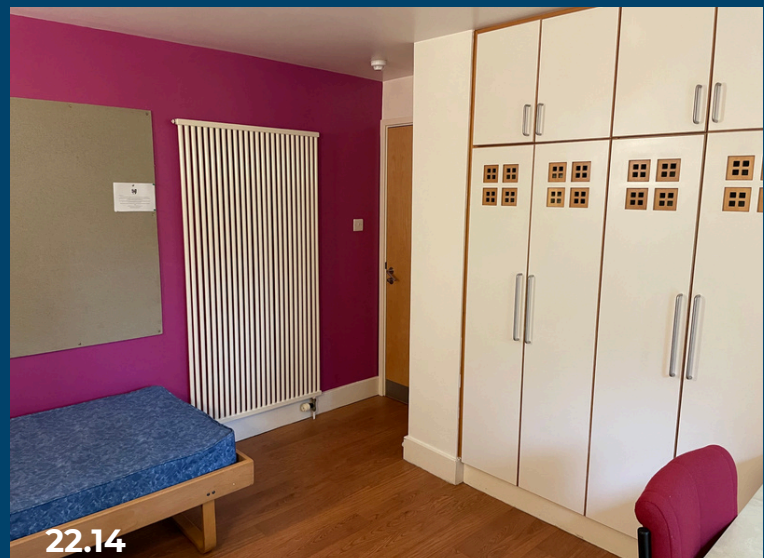


21.08

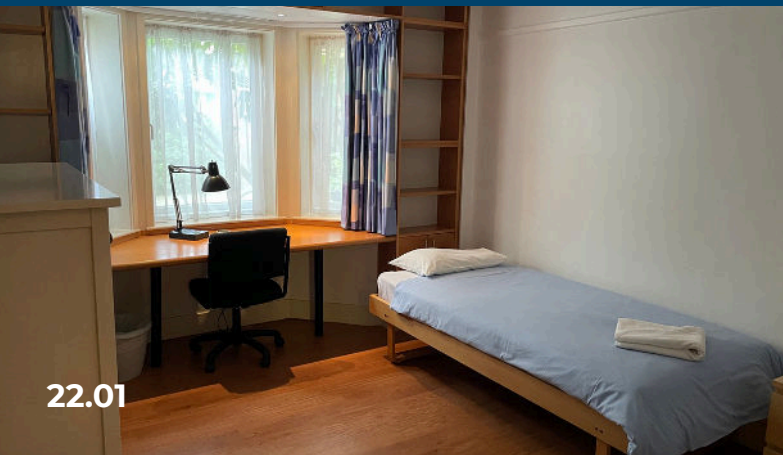
STAIRCASE 22

Up to 14 B grade rooms

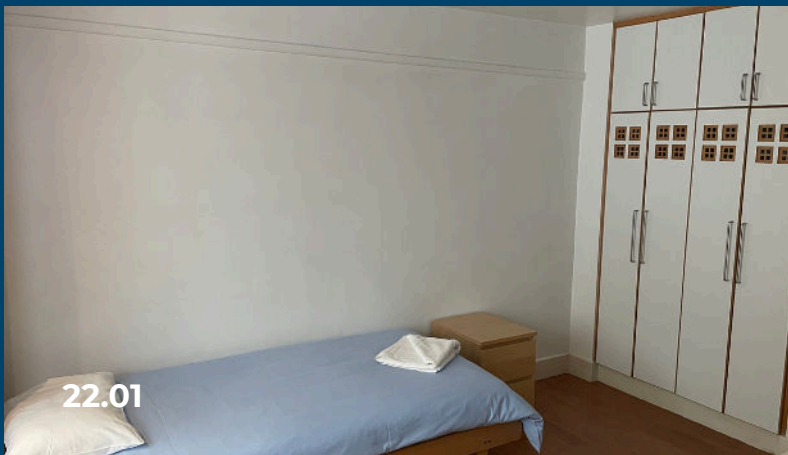
Graduate accommodation in Stc 22 consists of three 4-bed flats and one 2-bed flat, each sharing a kitchen and bathroom.



22.01-04 kitchen



22.01-04 bathroom



22.01

22.01

22.02

22.02

22.03

22.03

22.04

22.04



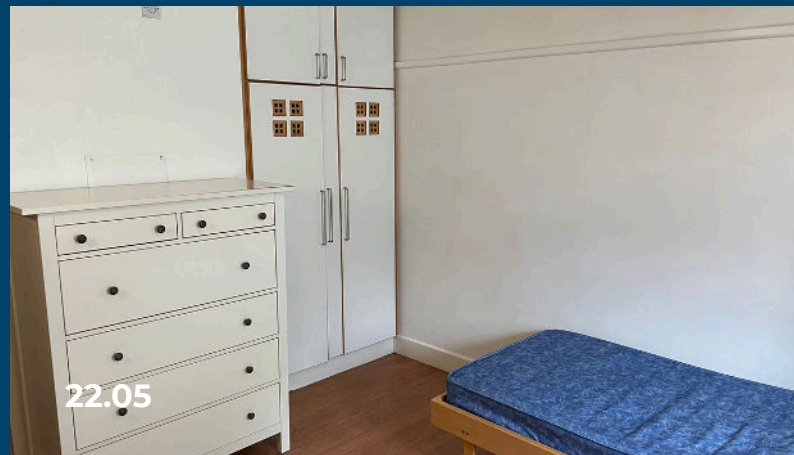
22.05-08 kitchen



22.05-08 bathroom



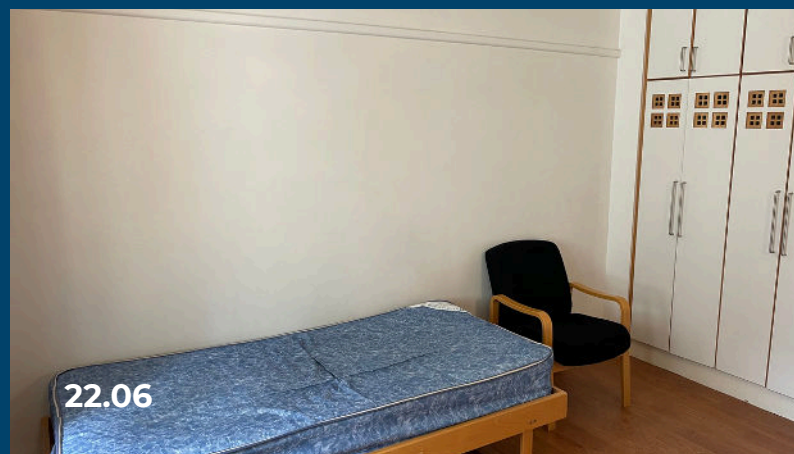
22.05



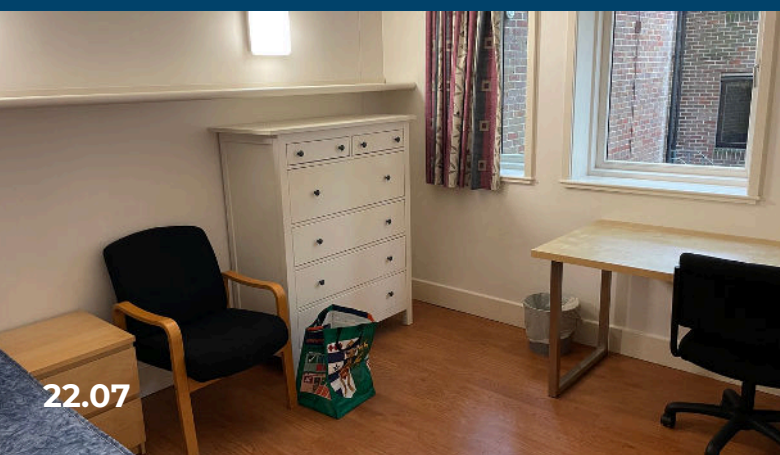
22.05



22.06



22.06



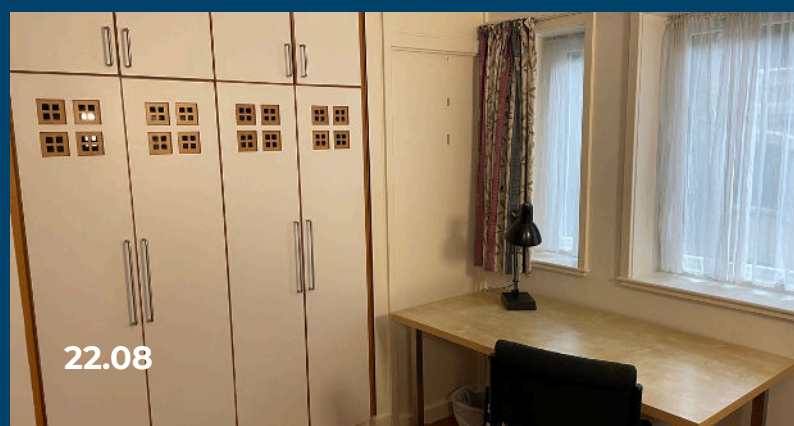
22.07



22.07



22.08



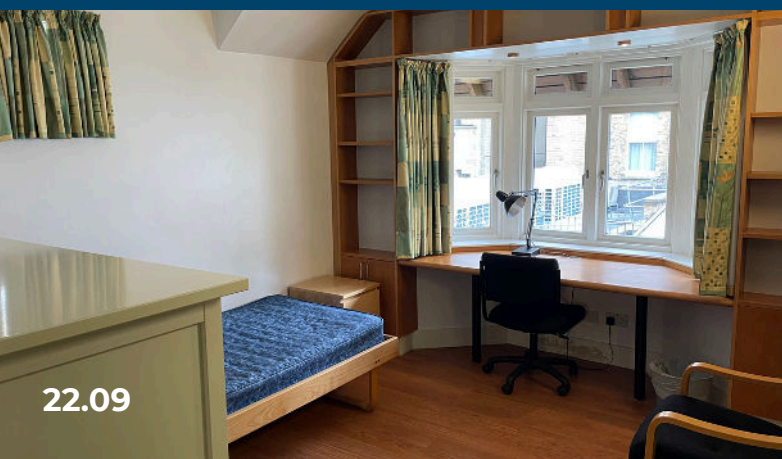
22.08



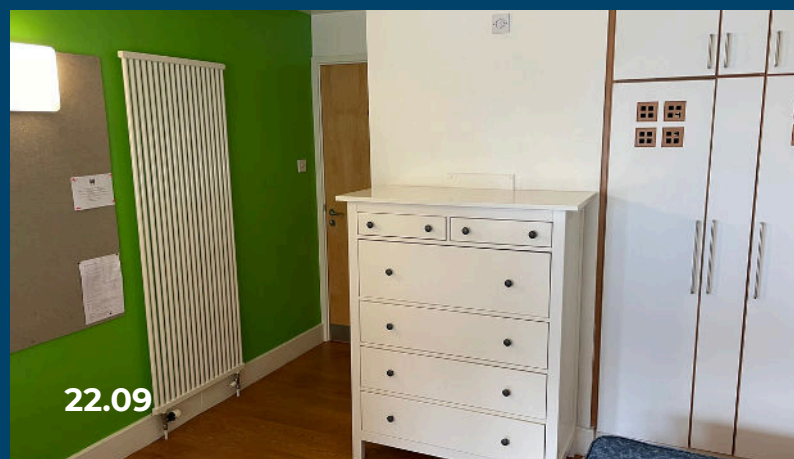
22.09-12 kitchen



22.09-12 bathroom



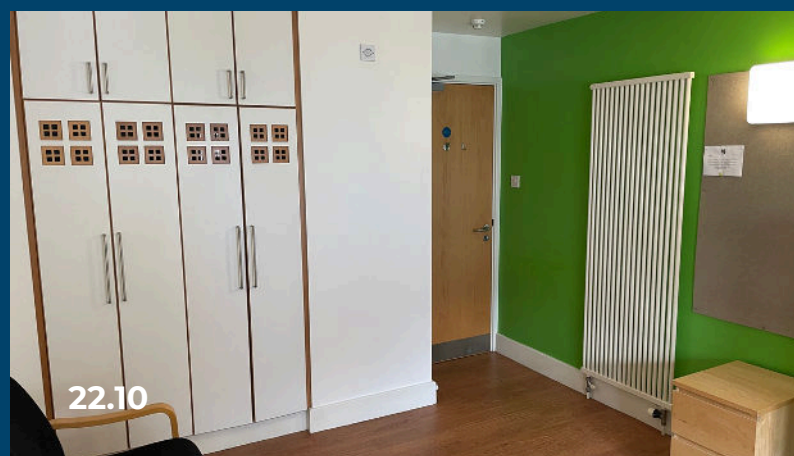
22.09



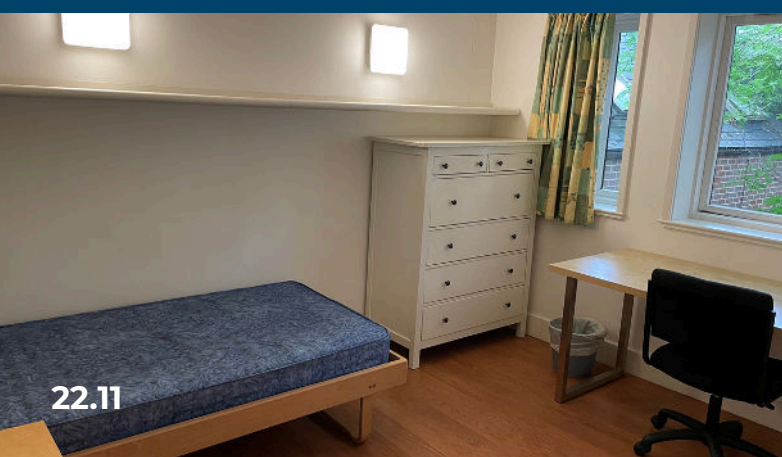
22.09



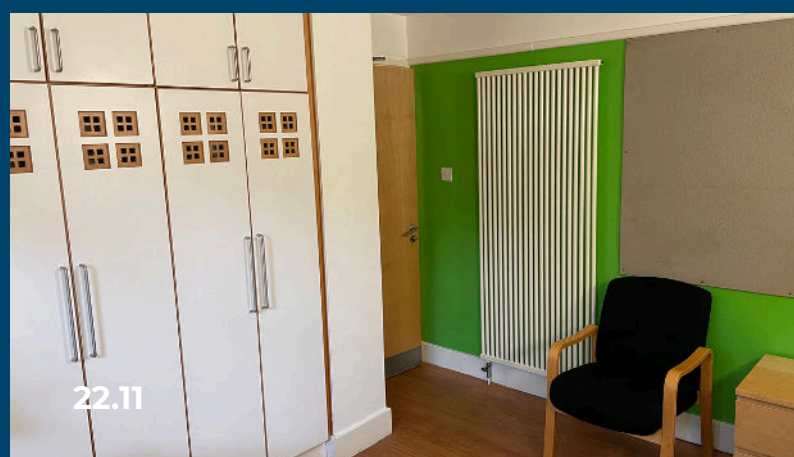
22.10



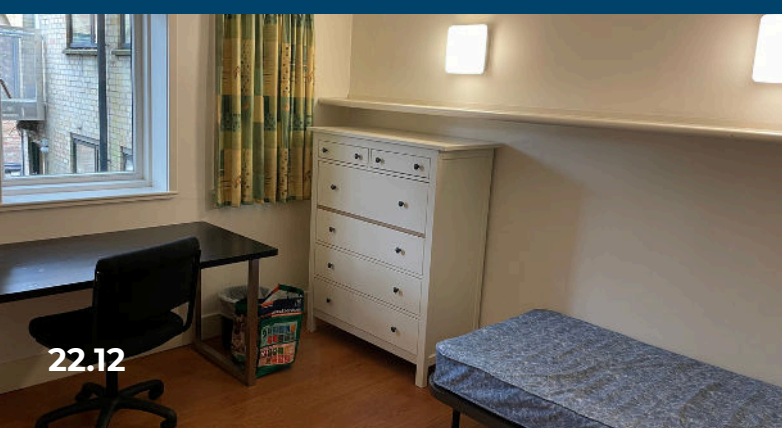
22.10



22.11



22.11



22.12

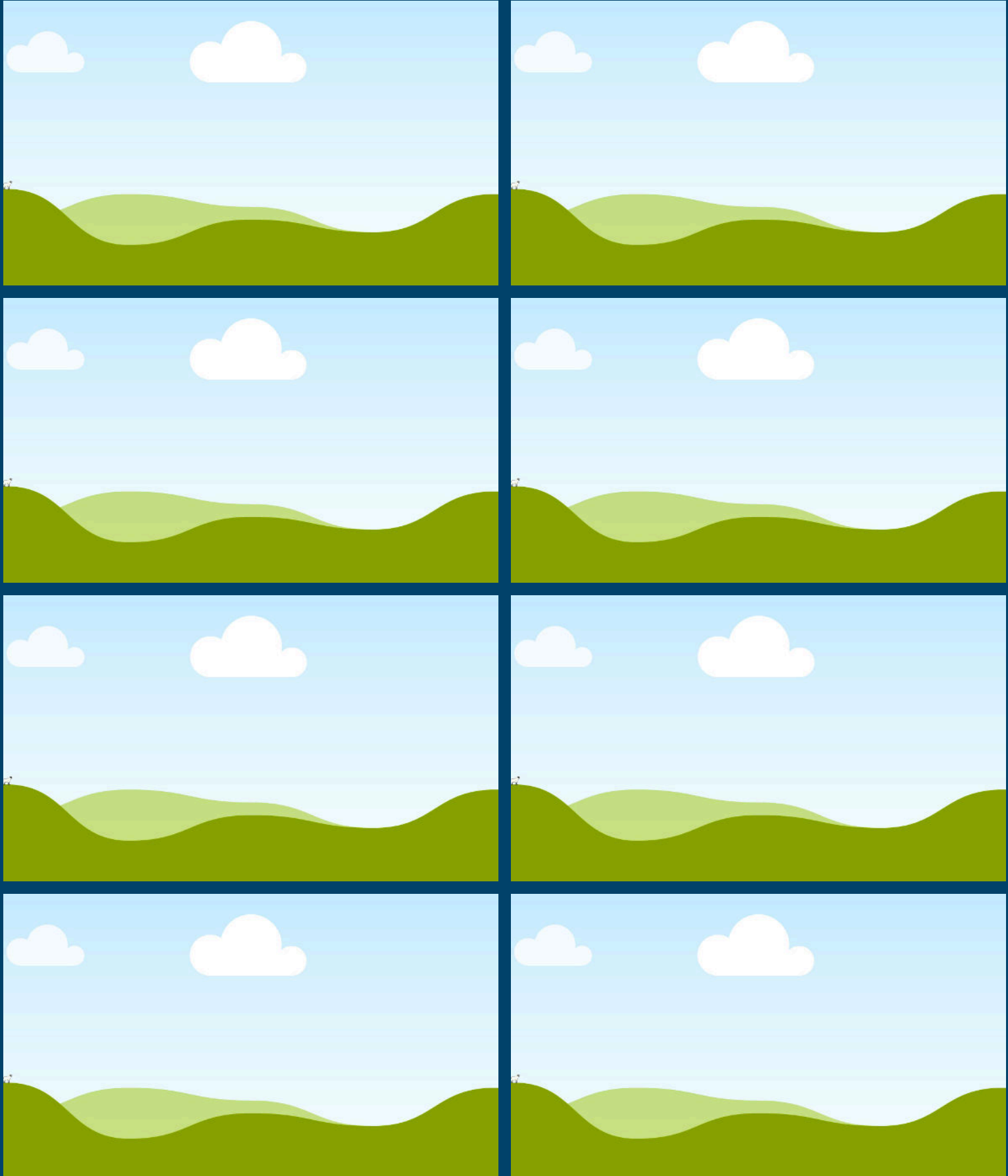


22.12

HIGH STREET 114

Up to 11 B and C grade rooms

Graduate accommodation in HS 114 consists of two three bed flats and one five bed flat, each sharing a kitchen and bathroom.



BL 5

Up to 3 D grade rooms

Graduate accommodation in BL 5 consists of one three bed house sharing a kitchen and bathroom.



BL 5 kitchen



BL 5 bathroom



BL 5 living space



BL 5.3



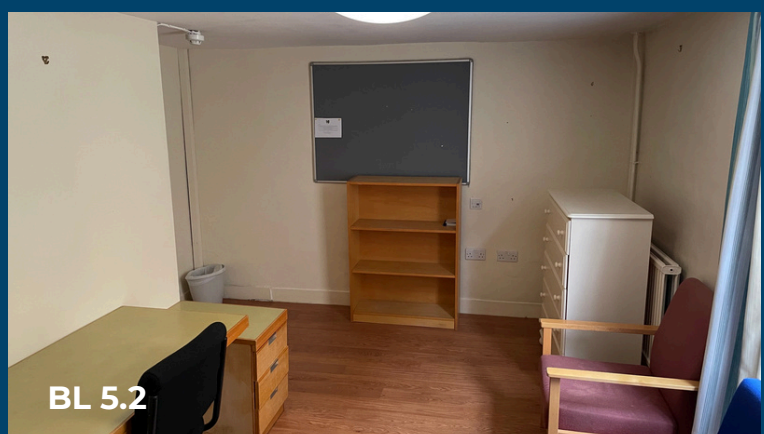
BL 5.1



BL 5.1



BL 5.2

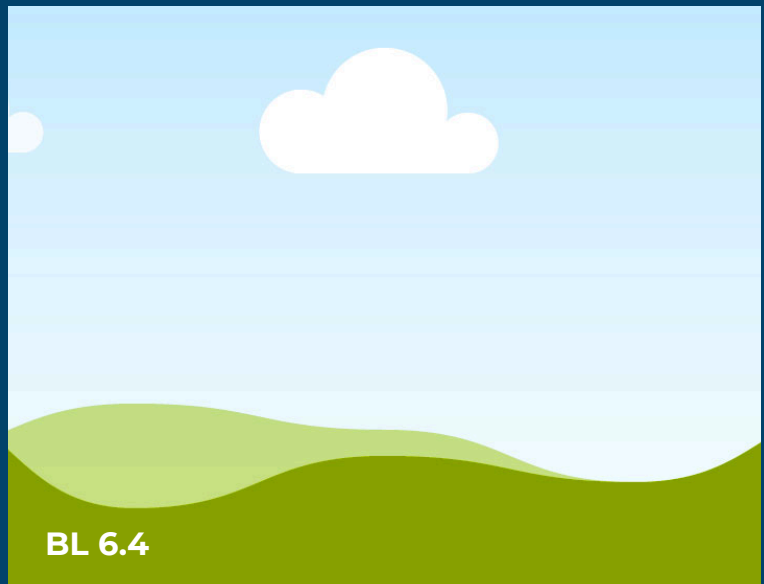
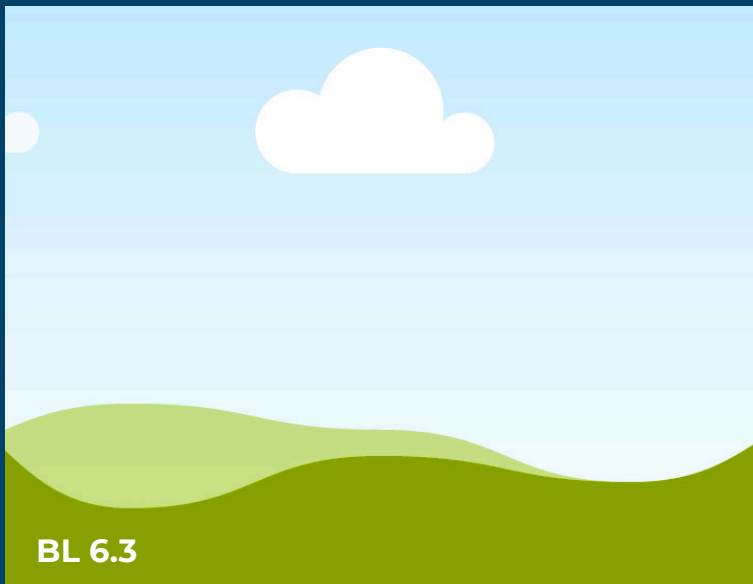
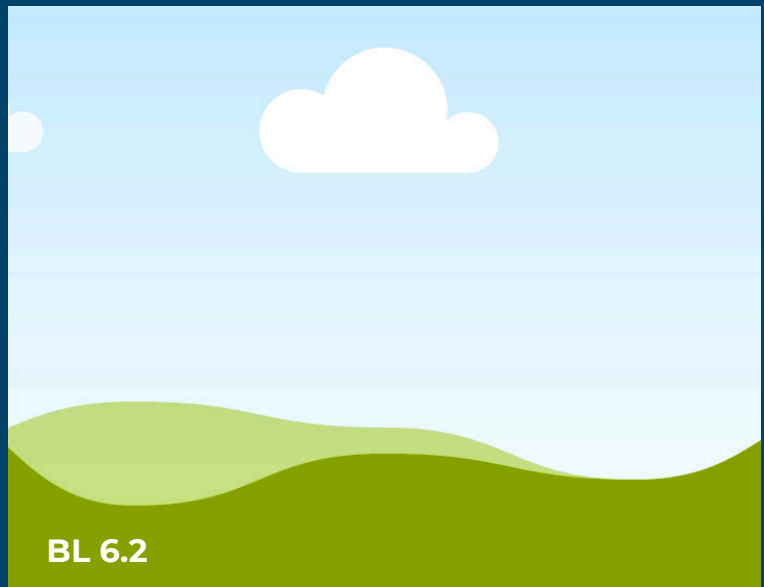
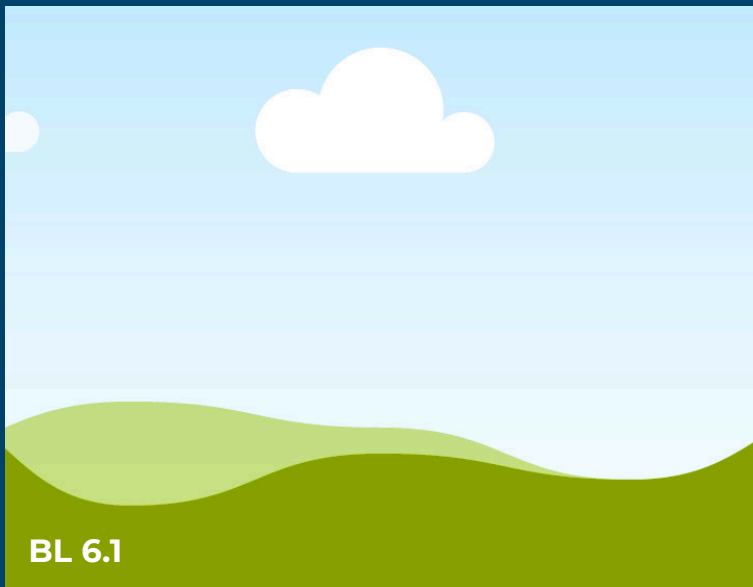
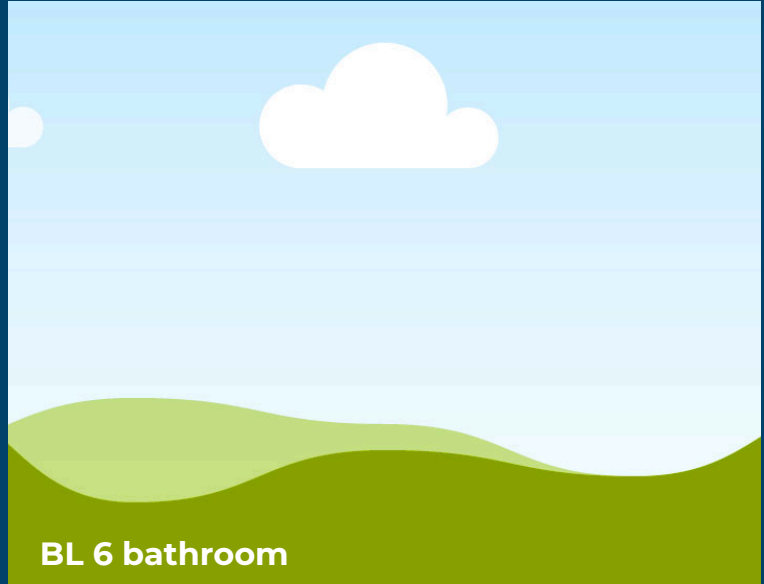


BL 5.2

BL 6

Up to 4 D grade rooms

Graduate accommodation in BL 6 consists of one four bed house sharing a kitchen and bathroom. BL 6.1 has a private toilet.



BL 8

Up to 3 D grade rooms

Graduate accommodation in BL 8 consists of one three bed house sharing a kitchen and bathroom.



BL 8 kitchen



BL 8 living space



BL 8.1



BL 8.1



BL 8.2



BL 8.2



BL 8.3



BL 8.3

BL 9-10

Up to 6 D grade rooms

Graduate accommodation in BL 9-10 consists of one six bed house sharing a kitchen and two bathrooms. Each room has its own sink.



BL 9-10 kitchen



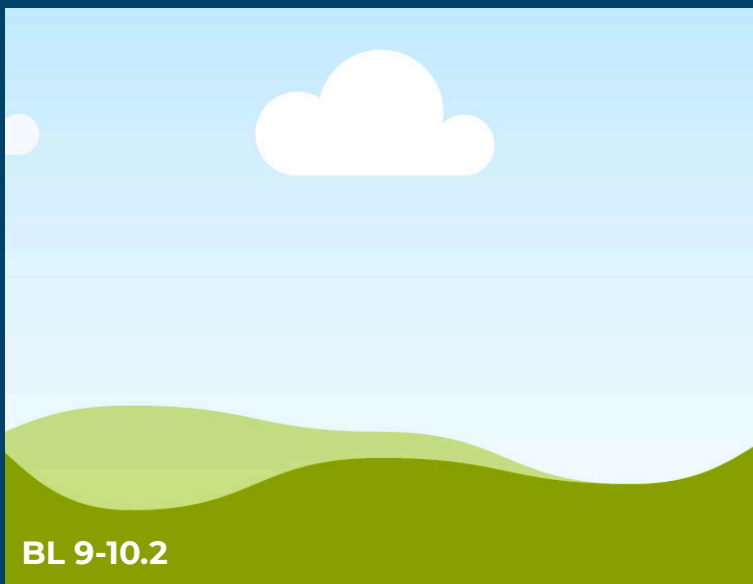
BL 6 living space



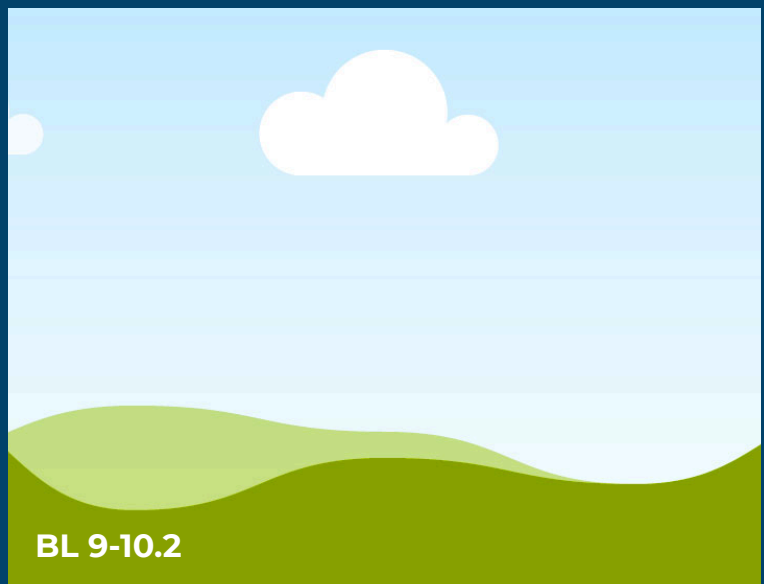
BL 9-10.1



BL 9-10.1



BL 9-10.2



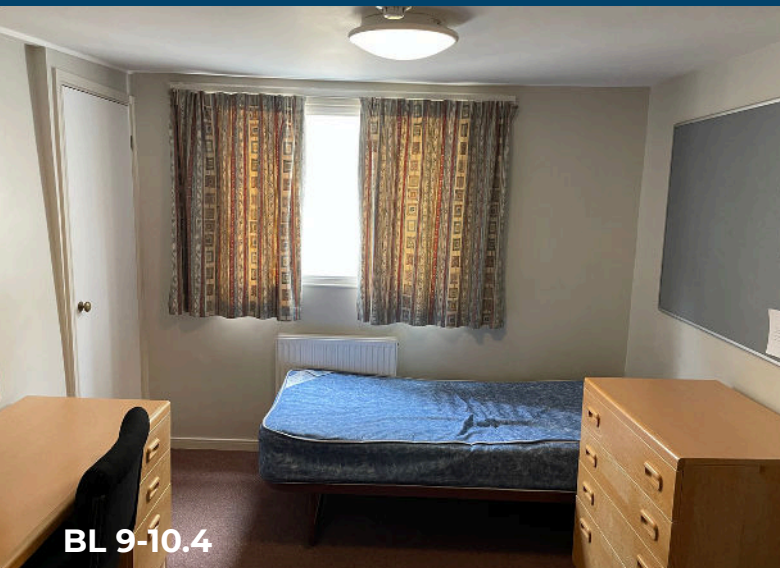
BL 9-10.2



BL 9-10.3



BL 9-10.3



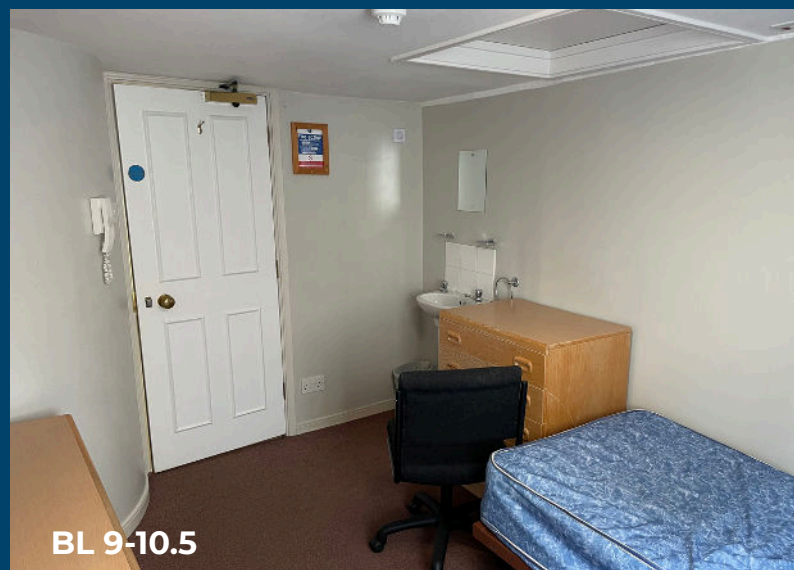
BL 9-10.4



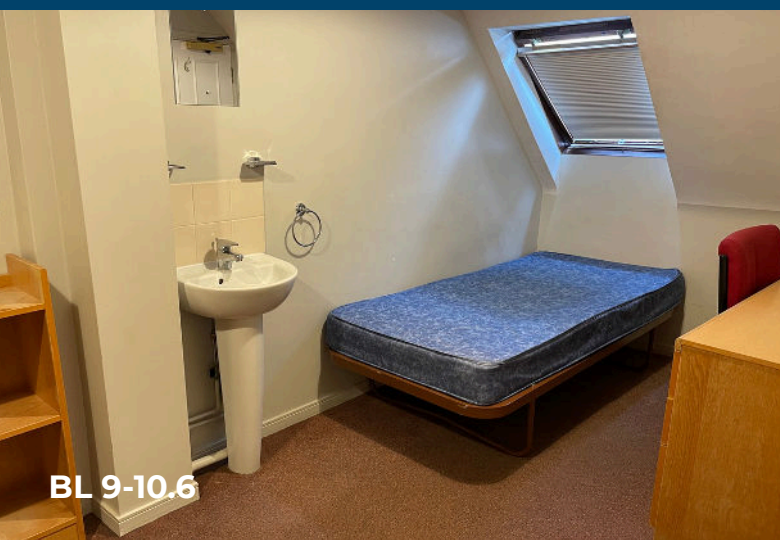
BL 9-10.4



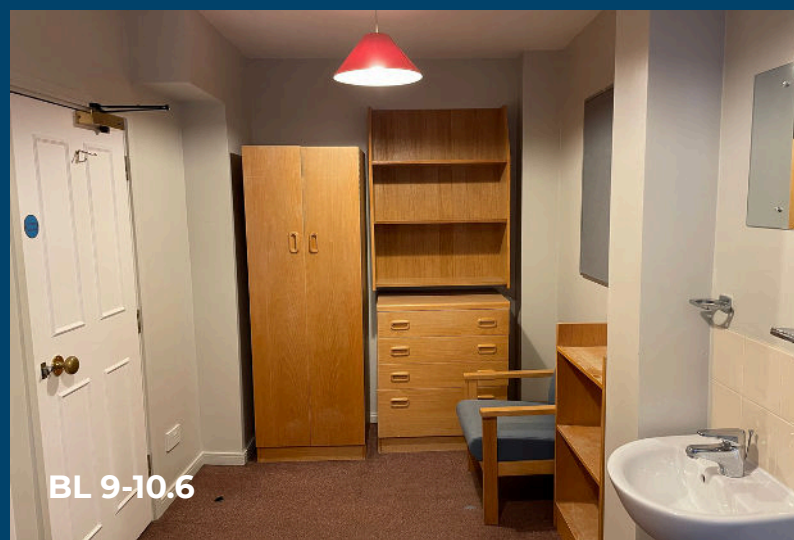
BL 9-10.5



BL 9-10.5



BL 9-10.6



BL 9-10.6

EMILY CARR HOUSE

Up to 4 D grade rooms

Generally reserved for MCR Committee members, this house hosts the termly Emily Carr House Party and is therefore not suitable for those of a quieter disposition. The MCR requires that the occupant of room 1 vacates for the night of the house party. Questions about this should be directed to the MCR President.

A graphic for room BL 6 kitchen featuring a light blue sky with a single white cloud and green rolling hills at the bottom.

BL 6 kitchen

A graphic for room BL 6 bathroom featuring a light blue sky with a single white cloud and green rolling hills at the bottom.

BL 6 bathroom

A graphic for room BL 6.1 featuring a light blue sky with a single white cloud and green rolling hills at the bottom.

BL 6.1

A graphic for room BL 6.2 featuring a light blue sky with a single white cloud and green rolling hills at the bottom.

BL 6.2

A graphic for room BL 6.3 featuring a light blue sky with a single white cloud and green rolling hills at the bottom.

BL 6.3

A graphic for room BL 6.4 featuring a light blue sky with a single white cloud and green rolling hills at the bottom.

BL 6.4

General information

Licences:

- All licences are 37 weeks with a 3 month break clause
- Early arrival is possible from 7th September (subject to availability) by emailing accommodation@lincoln.ox.ac.uk
- All rooms are single occupancy
- Room rates include heating, electricity and wifi (Eduroam)

Accommodation:

- All beds are single unless otherwise indicated at time of booking
- All rooms are furnished with a bed, mattress, wardrobe, desk and desk chair. Where space permits, there may be additional shelving, drawers, or an easy chair
- Online portal for reporting maintenance
- All sites have laundry access
- Lodges are open 24/7

Location and Travel:

- Bike racks are provided at all locations
- There is no parking for motorised vehicles
- e-bikes and electronic scooters are not permitted at any of our sites
- The College GP surgery is based next to the main College site

Cleaning:

- Rooms are serviced fortnightly (bins and bathrooms)
- Kitchens are serviced weekly
- Shared bathrooms are serviced regularly depending on number of students sharing
- Students are responsible for maintaining rooms and shared spaces between cleans